

Original Equipment Manufacturer's

Coatings for Superior Protection of Heavy-Duty Equipment



Solving our customers' problems is how we got started and after 70 years, it's still our focus at Carboline.

1947



Since 1947, we have been dedicated to delivering innovative coatings, linings and fireproofing products. We are driven to provide the best solutions, service and quality to our customers.

Our customers can be confident that behind every sale is a team of some of the most well-respected members of the industry, dedicated and determined to make your project a success.



Our global network of industrial service centers and distribution points are strategically located around the world to provide the highest level of service and support for your project.

For over 60 years Carboline has been supplying innovative, high performance industrial coatings to industrial Original Equipment Manufacturers (OEMs) that require ultimate protection. Carboline offers OEM solutions based on extensive experience in corrosion in extreme industrial environments. Unlike our competitors who offer off the shelf answers, Carboline engineers solutions for unique challenges specific to industrial OEM's.

Product Line

- > Wet-on-Wet (WOW) cabability
- > Lower VOC's and HAP's
- > Reduced rework
- > Rapid cure coatings
- > Dedicated customer service
- > Product development and testing
- > Local inventory and fast delivery

Trusted Partner

1. Over 68 years of experience
2. Problem-solving approach
3. Strategic manufacturing locations and service centers
4. Technical support
5. Field service support
6. Regulatory compliant products
7. Testing services
8. New technologies

Affiliations



www.carboline.com



Carboline Company has been in the business of solving corrosion-related problems since 1947.

We understand corrosion and know how to stop it. Our coatings protect tens of thousands of structures around the world including offshore platforms, coal-fired power plants, steel bridges, railroad tank cars and hopper cars, oil refineries and chemical plants, pulp and paper mills and wastewater treatment facilities.

Our Performance

But performance isn't just about corrosion and appearance. Performance coatings are also ones that improve your painting operations with faster dry times, faster cure times (throughput), fewer coats, fewer repairs and less touch-up. These features add benefits and savings to end users.

Product Development (Lab Tested & Field Proven)

All product development starts in the lab. But only when those products can be successfully applied in a shop and proven in the field are they worthy to be on your equipment. Carboline uses a performance-driven approach to our coatings development. Products must perform to a set of standards whether it is corrosion resistance or weatherability. Products must be easy-to-apply and offer benefits to the user that result in labor savings, faster scheduling or throughput, or superior physical properties that minimize repairs, repaints or call backs. Our goal is to show you that the true cost of a Carboline system will be less expensive than your current supplier.

Problem Solving Approach: We have the solution

Carboline is here to help. We often find that our customers don't know there may be a better solution or approach to a problem. It's our job to help you find those solutions to improve your painting operations and your bottom line. Perhaps the existing paint system isn't holding up like you'd like it to. Or you need a non-slip floor or step to add that special touch to your equipment. Perhaps a spray-on thin film insulation coating will make your equipment more comfortable in weather extremes. Whatever the need, we have the solution.

Technologies

- > Corrosion resistant primers
- > Weathering finishes
- > Non-Slip flooring
- > Thin-film insulation
- > Impact resistant
- > Specialized linings
- > Surface tolerant coatings



Your Process – Our Coatings

While your painting process is unique to your operations, we know that coatings that dry faster, topcoat quicker, handle better, apply easier, and have fewer repairs are benefits that every customer wants. Our approach is to find the best combination of coatings that best fits your operations to maximize the value of these benefits. To do that, we need to understand your process inside and out and determine where and how we can help.

1
Discovery Stage:

This is the stage where we find out how your parts are painted and why. A paint line survey will help us look for efficiency improvements, process steps, dwell times, repair slowdowns, painting methods, etc. Quite often we find customers don't realize there may be a better way to do things. We use our experience to discover ways we can help improve your painting operations.

2
Proposition Stage:

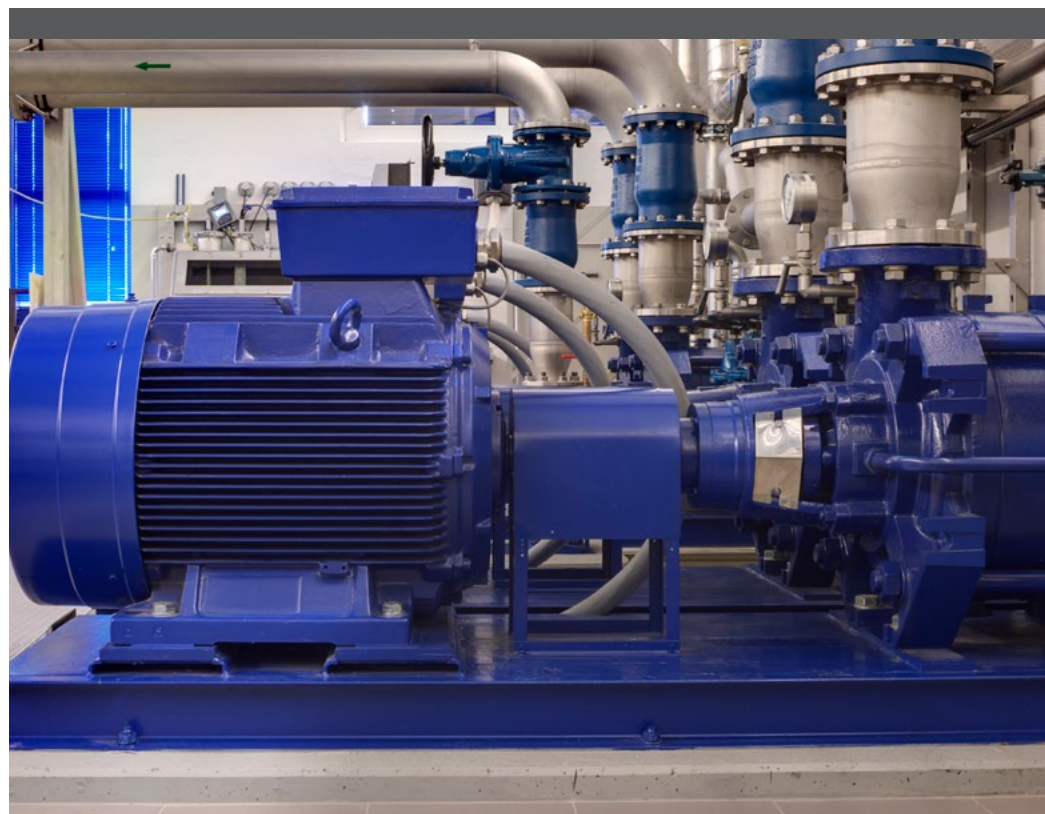
The Discovery Stage helps us to formulate a coating or coating system proposition to help improve your operations. We may propose several different approaches depending on your flexibility. These proposals may suggest significant changes or they may be subtle changes. In either case the proposition will highlight a benefit or multiple benefits to you.

3
Line Demo Stage:

This is where we prove our proposition on your line. Only by conducting a successful "line demo" can we demonstrate the value of our proposition to your satisfaction.

4
Validation Stage:

Based on the performance evaluation of the line demo and any additional testing that may be conducted, an overall validation of the claims and proposition will be presented for your consideration.



Corrosion Protection

We have engineered coating systems with performance levels to match any budget or need; from light duty to heavy duty; and from standard performance to long-term performance. Not all equipment demands the same performance. We have a system that's right for you.

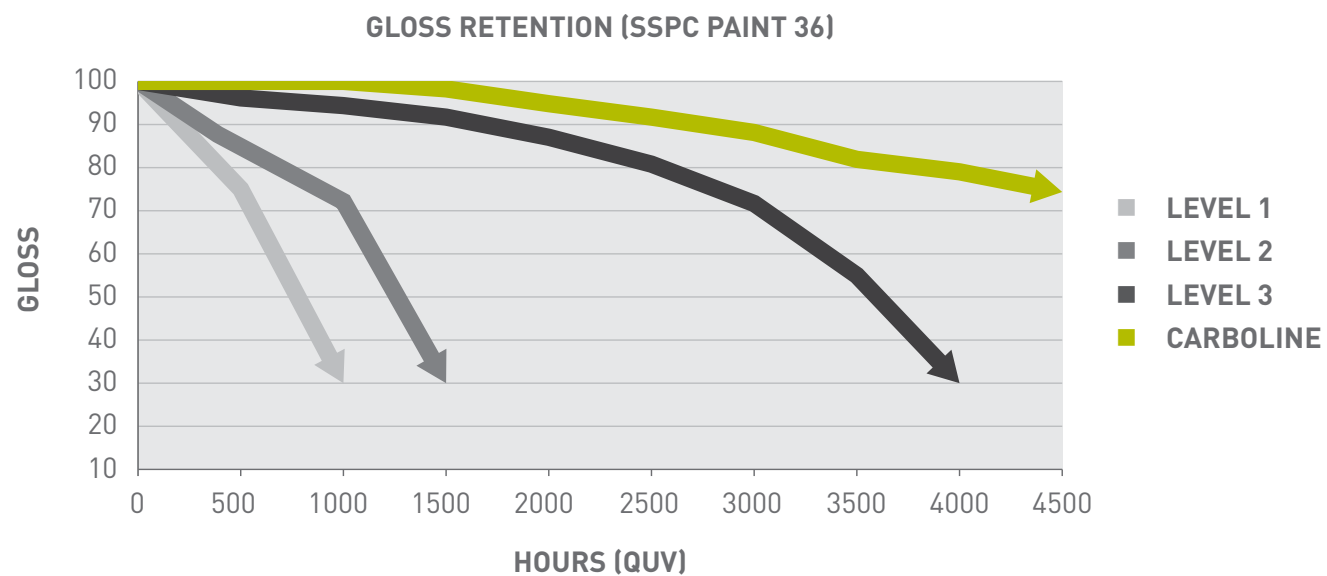
Systems for Every Need

- > Corrosion protection
- > Weathering resistance
- > Mar resistance
- > Chemical resistance
- > Fast cure
- > Single coat
- > Wet-on-wet systems
- > Light or heavy duty



Weathering Resistance

Again, not all equipment demands an automotive finish ... but if you need one, we have one. High profile equipment that looks good over time is a reflection on your brand identity. We have a weathering finish that's made just for your needs. You choose the level of performance that's right for you.



Industry leading products:

Carbothane finish coatings far exceed the industry's standard performance levels in weatherability (gloss retention).

Benefits of Performance Coatings

Performance coatings are ones that offer benefits to the end user. Those benefits can translate into increased performance, faster cure, easier touch-up or repair, shortened shop time, regulatory compliance, fewer steps and procedures, less waste, less mixing and many others. Newer technologies can not only increase the performance but make your whole painting process more efficient.

Performance coatings offer benefits two primary ways;

- Improved service life:**
Better corrosion performance and long term appearance which may give you a competitive advantage over your competition.
- Improved (faster) throughput:**
The coating system simply allows you to speed your painting operations to get parts assembled and out the door quicker. Operation efficiencies could be found in surface preparation costs, application labor (perhaps fewer coats), fewer repairs, and faster cure speeds.

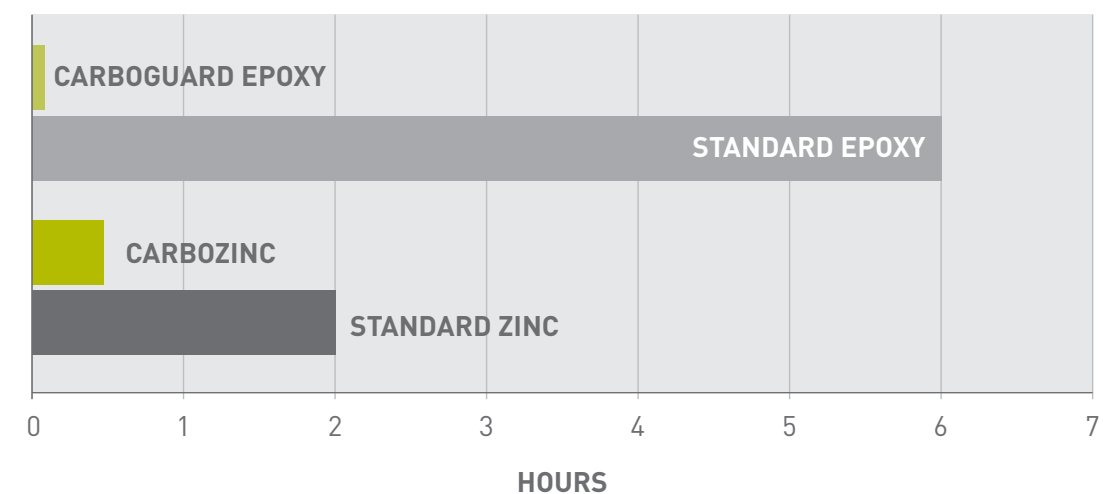
SYSTEM	DRY TO HANDLE*	EXPECTED SERVICE LIFE	PRIMARY FEATURES
TRADITIONAL SYSTEM: Single coat alkyd enamel	4 hours	2 years	Lowest paint material cost
CARBOLINE SYSTEM: Single coat polyurethane	2 hours	4 years	Faster dry times/throughput Longer service life
TRADITIONAL SYSTEM: Epoxy primer/urethane finish	16 hours	6 years	Good corrosion protection
CARBOLINE SYSTEM: Zinc primer/urethane finish	4.5 hours	10 years	Excellent corrosion protection Rapid dry to topcoat and handle

*Dry to handle times can be accelerated even more through heat (as fast as 45 minutes).

Shop-Friendly Coatings

Coatings that are not easy to apply or dry fast enough for your operations are of no use to you. So we have designed systems with "speed of cure" in mind. We have systems that may eliminate a coat of paint, improve the flow of your operations, and reduce labor costs. Whether they are two-coat systems with "wet-on-wet" capability or single coat systems designed to eliminate steps, the right system can be engineered to fit your needs.

DRY TO TOPCOAT TIMES



GLOBAL COATINGS LEADERS™

RIGHT PEOPLE · RIGHT PRODUCTS · RIGHT LOCATIONS



GLOBAL MANUFACTURING PLANTS

CARBOLINE COMPANY

GLOBAL HEADQUARTERS
2150 SCHUETZ ROAD
ST. LOUIS, MO 63146 USA
PH: +1-314-644-1000
WWW.CARBOLINE.COM

ARGENTINA – BUENOS AIRES

EINSTEIN 1095
PARQUE INDUSTRIAL OKS
GARÍN PROV. DE BUENOS
AIRES, ARGENTINA
PHONE: 54-3327-44-2222
FAX: 54-3327-44-2223

CANADA – ONTARIO

420 TAPSCOTT ROAD UNIT 5
SCARBOROUGH, ONTARIO
M1B 1Y4, CANADA
PHONE: 416-292-2361
FAX: 416-298-5887

CHINA – DALIAN

HOU SHI CUN, DA WEI JIA
ZHEN
JIN ZHOU DISTRICT
DALIAN, CHINA 116110
PHONE: 86-411-8789-8441,
8442, 8443, 8444
FAX: 86-411-8789-8445

INDIA – CHENNAI

NO. 356 & 357 SIDCO
INDUSTRIAL ESTATE
AMBATTUR,
CHENNAI 600 098
INDIA
PHONE: 91-22-28500321
FAX: 91-22-28500323

INDONESIA

PT CARBOLINE INDONESIA
SOLUSI
WISMA 77, TOWER 1 – 12TH
FL
JL. LETJEN S PARMAN KAV 77
SLIPI, JAKARTA BARAT
INDONESIA 11410
PHONE: +62-21-536-3070

ITALY – ALGHERO

VIA MILANO 150
20093 COLOGNO MONZESE
(MI), ITALY
PHONE: 3902-25 3751
FAX: 3902-25 37560

JAPAN – AMAGASAKI

TERAMOTO UNYU SOKO CO.,
LTD 17
MINAMIHATSUSHIMA-CHO,
AMAGASAKI, 660-0833 JAPAN
PHONE: 81-3-3643-4501
FAX: 81-3-3643-2951

NEW ZEALAND – TAURANGA

91-111 OROPI ROAD
GREERTON
TAURANGA
NEW ZEALAND
PHONE: +64-7-5411-221
FAX: +64-7-541-1310

NORWAY – LIERSTRANDA

P.O. BOX 593
3412 LIERSTRANDA, NORWAY
PHONE: 47-32-857300
FAX: 47-32-857301

PUERTO RICO – SAN LORENZO

URB. APONTE #5
SAN LORENZO, PUERTO RICO
00754
PHONE: 787-736-4221
FAX: 787-736-53133

SAUDI ARABIA – DAMMAM

1ST INDUSTRY CITY, 28TH
STREET
P.O. BOX 1050
DAMMAM 31431,
KINGDOM OF SAUDI ARABIA
PHONE: +966-3-847-3044
FAX: +966-3-847-3689

SOUTH AFRICA –

JOHANNESBURG
8 CRESSET ROAD
MIDRAND INDUSTRIAL PARK
JOHANNESBURG,
SOUTH AFRICA
PHONE: 27-11-2545500
FAX: 27-11-310-2872

SOUTH KOREA – BUSAN

43-1, JINYOUNG-RI
JINYOUNG-EUB
KIMHAE-CITY, 621-800
KYOUNGSANGNAMDO, KOREA
PHONE: 82-55-343-6441/5
FAX: 82-55-343-6414

THAILAND

DIMET (SIAM) PUBLIC
COMPANY LIMITED.
602 MOO 2 BANGPOO
INDUSTRIAL ESTATE
BANGPOOMAI, MUANG
SAMUTPRAKARN
THAILAND
PHONE: 66-2-323-2800

TURKEY – BURSA

ALI OSMAN SONMES CAD.
NO:4
BURSA, DOSAB 16369 TURKEY
PHONE: 90-224-261-0537

UAE – DUBAI

P.O. BOX 3034
DUBAI, UAE
PHONE: 971-4-347-0460
FAX: 971-4-347-0242

USA – DAYTON

95 AIRPARK VISTA BLVD.
DAYTON, NV 89403
PHONE: 775-246-0760
FAX: 775-246-0763

USA – GREEN BAY

614 ELIZABETH ST
GREEN BAY, WI 54302
PHONE: 920-437-6561
FAX: 920-437-8546

USA – LAKE CHARLES

900 OPELOUSAS STREET
LAKE CHARLES, LA 70601
PHONE: 337-433-0605
FAX: 337-439-0380

USA – LOUISA

321 DUKE ST.
LOUISA VA 23093
PHONE: 540-967-5119
FAX: 540-967-5120

VENEZUELA – VALENCIA

URBANIZACION INDUSTRIAL
"EL TIGRE"
AVENIDA PRINCIPAL
GALPÓN "H"
VALENCIA EDO. CARABOBO
VENEZUELA
PHONE: 58-245-4000400
FAX: 58-245-5642011

VIETNAM – TINH BINH DUONG

LO D, 4R-CN
KHU CONG NGNIEP MY PHUOC 3
THI XA BEN CAT
VIETNAM
PHONE: (84) 08-3822-7684

